

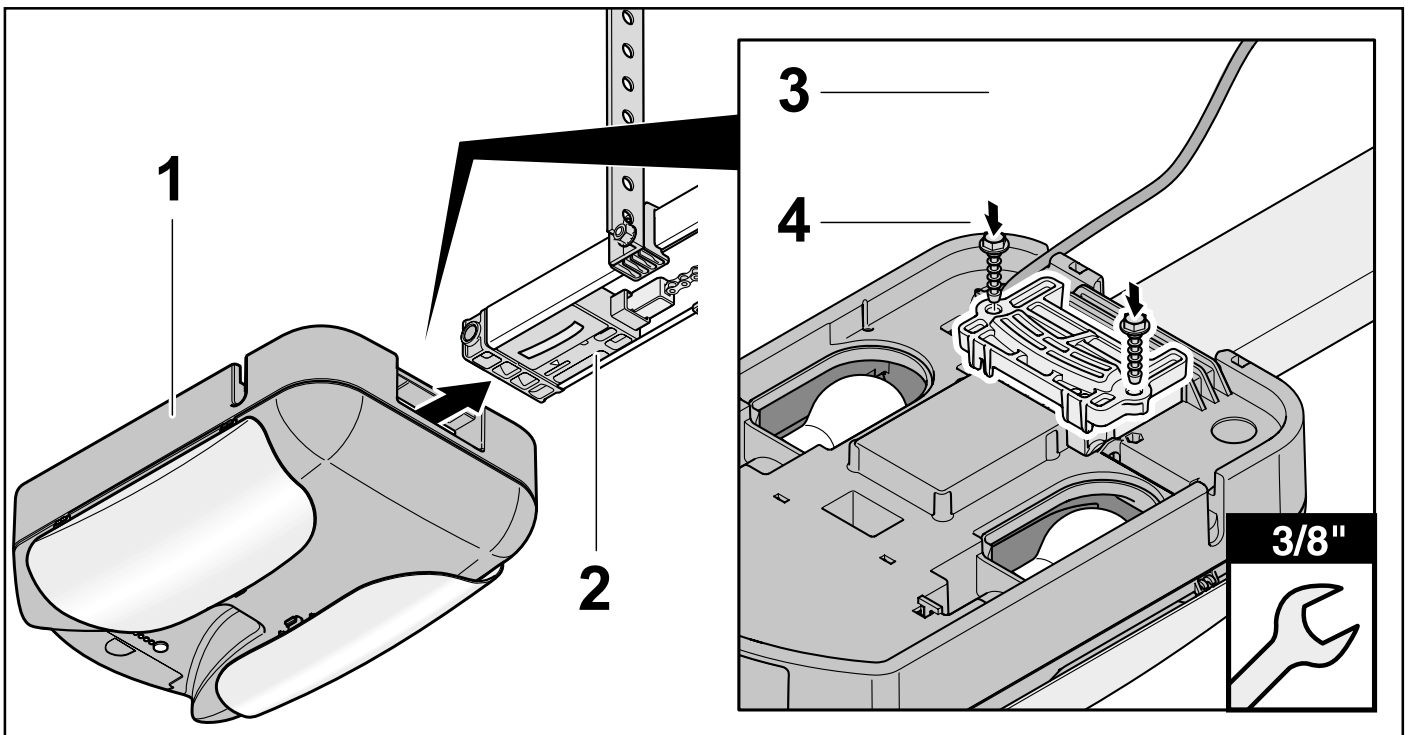
ATTENTION!

SOMMER

Due to product improvement the scope of delivery has changed. The fastening bolt to attach the control housing to the C-rail (Variant 1) is no longer used and therefore not supplied anymore.

Please use the pressure plate as described below in Variant 2.

VARIANT 2



1. Make sure the contact on the slide in part (2) faces down.
2. Slide the control housing (1) all the way onto the rail.
3. Fasten the screws (3) to fix the pressure plate (4) with the control housing.
4. The electrical contact is established after connecting the control housing to the C-rail. The two contacts supply power (24V) to the motor carriage.

VARIANT 1

